

Anbausätze für Stellungsregler Attachment kits for positioners Kits de montage pour les positionneurs

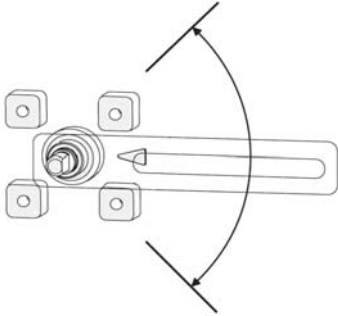


Diese Technische Information für Anbausätze bietet eine Übersicht über Anbaumöglichkeiten von Foxboro Eckardt Stellungsreglern und Stellungsumformern an gängige Hub- und Schwenkantriebe.

This technical information gives an overview of the attachment possibilities of Foxboro Eckardt Positioners and Positions transmitters on linear and rotative actuators.

Cette information technique donne une vue d'ensemble des possibilités de montage des positionneurs et recopies de position de Foxboro Eckardt sur des servomoteurs linéaires ou rotatifs.

Anlenkhebel für SRD991 - SRI990 - SRD960 - SRD998
Feedback lever for SRD991 - SRI990 - SRD960 - SRD998
Levier de raccordement pour SRD991 - SRI990 - SRD960 - SRD998



Maximum rotation of Feedback lever for SRD991 - SRI990 - SRD960 - SRD998 is 90°

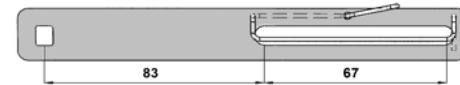
EBZG-A

Feedback lever for stroke 8 to 70mm



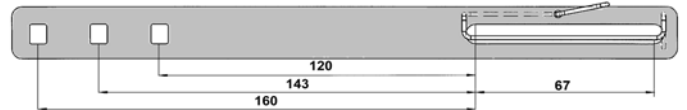
EBZG-B

Feedback lever for stroke 60 to 120mm



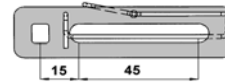
EBZG-A1

Extended feedback lever for stroke 110 to 260mm



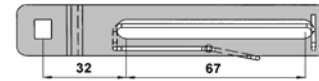
EBZG-A2

Extra short feedback lever for stroke 5 to 15mm



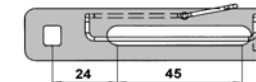
EBZG-A3

Feedback lever fold for stroke 8 to 70mm



EBZG-A4

Short feedback lever for stroke 8 to 35mm

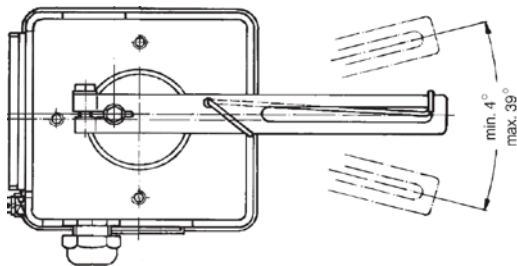


EBZG-NW

Locknut (M8) and washer



Anlenkhebel für SRP981-SRI983 - SRI986 - SMI983 - SMP981 - SGE985
Feedback lever for SRP981-SRI983 - SRI986 - SMI983 - SMP981 - SGE985
levier de raccordement pour SRP981-SRI983 - SRI986 - SMI983 - SMP981 - SGE985



Maximum rotation of Feedback lever for SRP981 - SRI983 - SRI986 - SMI983 - SMP981 - SGE985 is 39°

- EBZG-ON**
Feedback lever for stroke up to 50mm

- EBZG-AN**
Feedback lever for stroke up to 80mm

- EBZG-AN1**
Feedback lever for stroke 100mm to 150mm

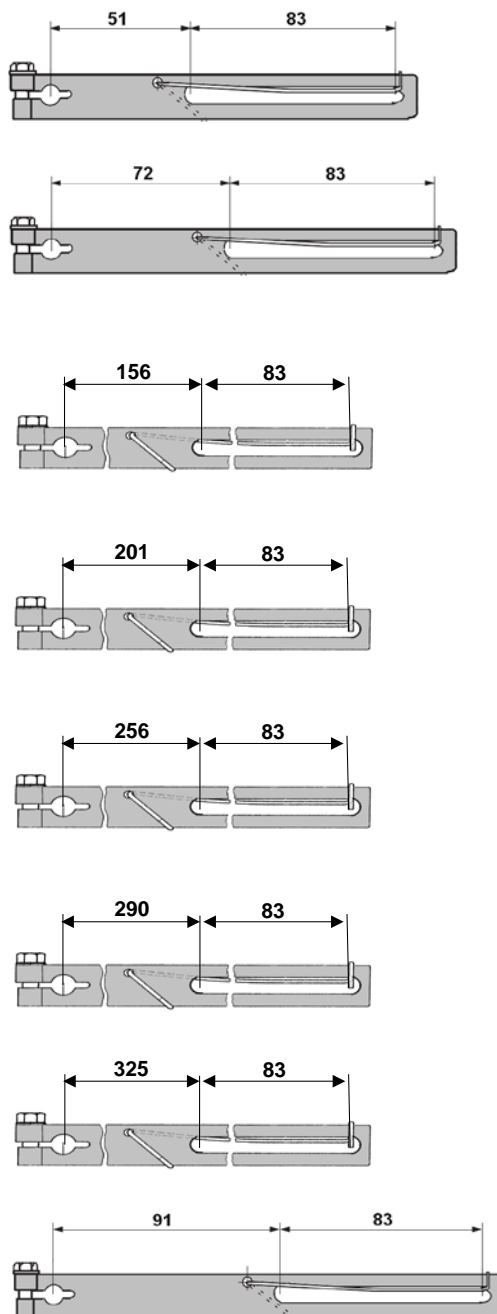
- EBZG-AN2**
Feedback lever for stroke 130mm to 170mm

- EBZG-AN3**
Feedback lever for stroke 170mm to 210mm

- EBZG-AN4**
Feedback lever for stroke 190mm to 230mm

- EBZG-AN5**
Feedback lever for stroke 210mm to 250mm

- EBZG-BN**
Feedback lever for stroke up to 100mm



Extended lever for SRP981-SRI983-SRI986 up to 250mm available on request
 Anlenkhebel für SRP981-SRI983-SRI986 mit verlängertem Hubbereich bis 250 mm auf Anfrage
 Leviers pour SRP981-SRI983-SRI986 pour course jusqu'à 250mm disponible sur demande

Anlenkbolzen
Carrier bolt
Doigt d'entraînement

Anlenkbolzen mit Befestigung system
Carrier bolt with fixing system
Doigt d'entrainement avec système de fixation

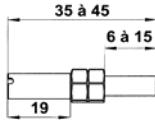
SRXG-A

Extra short carrier bolt 23mm



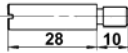
SRXG-B

Adjustable carrier bolt
 (20mm up to 37mm)



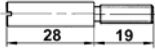
SRXG-C

Carrier bolt 38mm



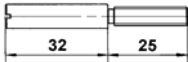
SRXG-D

Carrier bolt 47mm



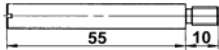
SRXG-E

Carrier bolt 57mm



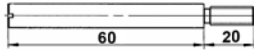
SRXG-F

Carrier bolt 65mm



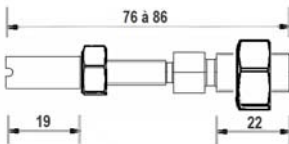
SRXG-I

Carrier bolt 80mm



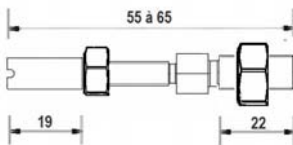
SRXG-J

Adjustable carrier bolt 3/8" / M6



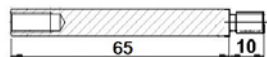
SRXG-K

Adjustable carrier bolt 5/16" / M6



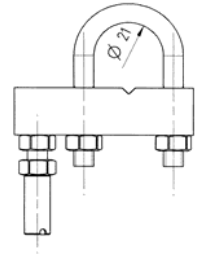
SRXG-L

Extension for carrier bolt



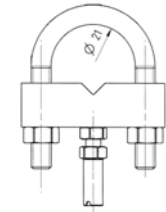
SRXG-G

Adjustable carrier bolt (SRXG-B)
 with fixing system for stem diameter up to 21mm



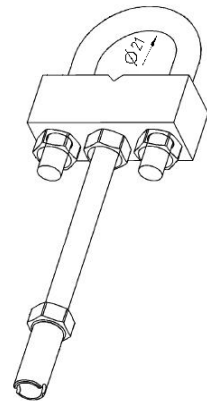
SRXG-G1

Adjustable carrier bolt (SRXG-B)
 with fixing system for stem diameter up to 21mm



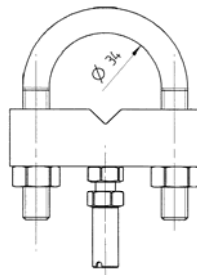
SRXG-G2

Adjustable carrier bolt (SRXG-B)
 with fixing system for stem diameter up to 21mm
 with extension up to 80 mm



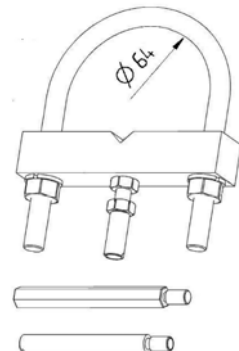
SRXG-H

Adjustable carrier bolt (SRXG-B)
 with fixing system for stem diameter up to 34mm



SRXG-M

Adjustable carrier bolt (SRXG-B)
 with fixing system for stem diameter up to 64mm



Standard- und Sonder- Anbausätze, sortiert nach Hersteller / Typ des Antriebes
Standard and specific attachment kits classify by manufacturer / type of actuator
Kits de montage standard et spécifique par constructeurs / type de servomoteur

Type / Version	Model Code of attachment kit	SRD998	SRD991 SRI990	SRD960	SRP981	SRI983	SRI986	SGE985	SMI983	SMP981
ABB										
Model DSCV-G111/D16R	EBZG-Q2		•	•						
Model DSCV-G111/D28R	EBZG-Q1	•	•	•						
ADAREG										
	EBZG-H3	•	•	•						
Micro flow (type NM1 1/2")	EBZG-H4		•	•						
Without drilling the actuator / without existing holes	EBZG-H5	•	•	•						
AIR TORQUE										
Schwenkantrieb / rotary actuator / servomoteur rotatif VDI/VDE 3845 => page 6 Anbaukonsole / Mounting bracket / console de montage VDI/VDE 3845 => page 14										
AIRTEC ROCKY VALVE										
DC-1212-15D	EBZG-RON						•			
AMC & BAILEY										
(1) Cylinder Type SME0608	EBZG-X4		•	•						
(1) Cylinder Old Type	EBZG-X5	•	•	•						
AMG										
Schwenkantrieb / rotary actuator / servomoteur rotatif VDI/VDE 3845 => page 6 Anbaukonsole / Mounting bracket / console de montage VDI/VDE 3845 => page 14										
AMRI - KSB										
Schwenkantrieb / rotary actuator / servomoteur rotatif VDI/VDE 3845 => page 6										
(1) Old rotary actuator	EBZG-X3 (1)	•	•	•						
AMSTRONG										
Amstrong Valves from sizes 1" to 3"	EBZG-AM				•	•	•			
Amstrong Valves from sizes 1" to 3"	EBZG-AM1	•	•	•						
Amstrong 1500 Series Python valve	EBZG-AM3		•	•						
ARCA										
Baureihe 812	EBZG-GN				•	•		•	•	•
	EBZG-HN						•			
	EBZG-H	•	•	•						
Direct-mounting	EBZG-P2		•	•						
ARI										
	EBZG-FN				•	•		•	•	•
	EBZG-KN						•			
	EBZG-K		•	•						
Direct-mounting	EBZG-P1		•							
AUTOMAX (FLOWSERVE)										
Super Nova serie	Schwenkantrieb / rotary actuator / servomoteur rotatif VDI/VDE 3845 => page 6									
BAR										
2										
BETTIS										
Rotary G Series and Rack and pinion RPC series	Schwenkantrieb / rotary actuator / servomoteur rotatif VDI/VDE 3845 => page 6									
BIFFI										
Schwenkantrieb / rotary actuator / servomoteur rotatif VDI/VDE 3845 => page 6										
Old rotary actuator	EBZG-J	•	•	•						
	EBZG-JN				•	•	•	•	•	•
Bormann & Neupert										
Schwenkantrieb / rotary actuator / servomoteur rotatif VDI/VDE 3845 => page 6										
Bray										
Series 90/91	Schwenkantrieb / rotary actuator / servomoteur rotatif VDI/VDE 3845 => page 6									
Cashco										
Linear actuators type 25, 30, 55, 75, 115 Direct and Reverse	EBZG-GN				•	•		•	•	•
	EBZG-HN						•			
	EBZG-H	•	•	•						
Rotary spring diaphragm type 48, 148, 148X	EBZG-PN				•	•	•	•	•	•
	EBZG-R	•	•	•						

(1) One genuine part of AMRI is worked and used for feedback coupling part
 Ein nachgearbeitetes Originalteil von AMRI dient als Kupplung in diesem Anbausatz
 Une pièce d'origine AMRI est ré-usinée pour l'entraînement du positionneur

Standard- und Sonder- Anbausätze, sortiert nach Hersteller / Typ des Antriebes
Standard and specific attachment kits classify by manufacturer / type of actuator
Kits de montage standard et spécifique par constructeurs / type de servomoteur

Type / Version	Model Code of attachment kit	SRD998	SRD991 SR1990	SRD960	SRP981	SR1983	SR1986	SGE985	SM1983	SM1981
EBRO										
	Schwenkantrieb / rotary actuator / servomoteur rotatif VDI/VDE 3845 => page 6									
EL-O-MATIC										
	Schwenkantrieb / rotary actuator / servomoteur rotatif VDI/VDE 3845 => page 6 Anbaukonsole / Mounting bracket / console de montage VDI/VDE 3845 => page 14									
ENCORDIA										
Type DO45 and DO56	EBZG-AM2		•	•						
FESTO										
	Schwenkantrieb / rotary actuator / servomoteur rotatif VDI/VDE 3845 => page 6									
FIP										
Others sizes please contact us	EBZG-TM4		•	•						
FISHER										
Type 657,type 667 (linear) sizes 30 - 40	EBZG-F1	•	•	•						
	EBZG-TN (1)				•	•		•	•	•
	EBZG-QN (1)						•			
Type 657,type 667 (linear) sizes 45 - 60	EBZG-F3		•	•						
Type 657,type 667 (linear) sizes 70-100	EBZG-F4		•	•						
Type 3024S (linear)	EBZG-FN				•	•		•	•	•
	EBZG-KN						•			
	EBZG-K		•	•						
Type 1250 (linear)	EBZG-FN				•	•		•	•	•
	EBZG-KN						•			
	EBZG-K		•	•						
(1) Type 1051, 1052 (rotary) size 20	EBZG-F9	•	•	•						
(1) Type 1051, 1052 and 1061 (rotary) size 33	EBZG-F5	•	•	•						
(1) Type 1051, 1052 and 1061 (rotary) size 40, size 30	EBZG-F2	•	•	•						
(1) Type 1051, 1052 and 1061 (rotary) size 60	EBZG-F6	•	•	•						
Valve/Actuator GX (linear)	EBZG-GN				•	•		•	•	•
	EBZG-HN						•			
	EBZG-H		•	•						
FISHER - BAUMANN										
9000 sries	EBZG-F7	•	•	•						
42000 sries	EBZG-F8	•	•	•						
24000 series (linear)	EBZG-GN				•	•		•	•	•
	EBZG-HN						•			
	EBZG-H + SRXG-K	•	•	•						
FISHER - GULDE										
Type P	EBZG-UN				•	•		•	•	•
(2) Type S	EBZG-FN				•	•		•	•	•
	EBZG-KN						•			
	EBZG-K		•	•						

(1) Since this reference covers a wide range of actuators, the user might have to adapt certain attachment kits for some actuators slightly
 Da sich diese Referenz auf eine größere Anzahl von Antrieben bezieht, könnten geringfügige Änderungen bei Anbausätzen einiger Antriebe erforderlich sein
 Comme cette référence couvre une très large gamme de servomoteurs, il se peut que le client pour quelques servomoteurs soit obligé d'adapter légèrement notre kit de montage

(2) For some application mounting square must be worked
 Für manche Anwendungen muss der Anbauwinkel nachgearbeitet werden
 Pour certains servomoteurs, l'équerre de montage doit être usinée (raccourcie).

Standard- und Sonder- Anbausätze, sortiert nach Hersteller / Typ des Antriebes
Standard and specific attachment kits classify by manufacturer / type of actuator
Kits de montage standard et spécifique par constructeurs / type de servomoteur

Type / Version	Model Code of attachment kit	SRD998	SRD991 SR1990	SRD960	SRP981	SR1983	SR1986	SGE985	SM1983	SMP981
FOXBORO										
P-Series	EBZG-H1		•	•						
GEFA										
Schwenkantrieb / rotary actuator / servomoteur rotatif VDI/VDE 3845 => page 6										
GEMU										
Type 514 40D 1375 1 4 2061	EBZG-TM2		•	•						
Type 514 50D 1375 1 2 2061	EBZG-TM3		•	•						
Others sizes please contact us										
GEORG FISCHER (+GF+)										
Diastar (5 sizes: Head Ø =68-96-120-150 or 180mm)	EBZG-TM1		•							
Others sizes please contact us										
HAGAN										
Cylinder	EBZG-X1	•	•	•	<- righthand mounting					
2 1/2 X5 Thrust type swivel power positioner	EBZG-X2	•	•	•	<- lefthand mounting					
Others sizes please contact us										
HONEYWELL										
Baureihe 2000 (pillar yoke)	EBZG-FN				•	•	•	•	•	•
	EBZG-KN						•			
	EBZG-K		•	•						
Air-O-Motor Type 05	EBZG-SA				•	•	•	•	•	•
HYTORK										
Excel, Genesis,	Schwenkantrieb / rotary actuator / servomoteur rotatif VDI/VDE 3845 => page 6									
IAL										
	EBZG-VN				•	•				
	EBZG-WN						•			
INGERSOLL - RAND										
	EBZG-W2	•	•							
	EBZG-KN						•			
	EBZG-K		•	•						
JAMESBURY										
Quadra Power (old type)	EBZG-J1	•	•	•						
RP-SR Series (old type)	EBZG-J2	•	•	•						
KEYSTONE (TYCO)										
Model 79D, 79U, TRP	Schwenkantrieb / rotary actuator / servomoteur rotatif VDI/VDE 3845 => page 6 Anbaukonsole / Mounting bracket / console de montage VDI/VDE 3845 => page 14									
KAMMER (FLOWERVE)										
(for direct mounting)	EBZG-FN				•	•	•	•	•	•
	EBZG-KN						•			
	EBZG-E		•	•						
	EBZG-K		•	•						
KINETROL										
Model 05	EBZG-K2	•	•							
Model 07	EBZG-K3	•	•							
Model 09	EBZG-K4	•	•							
Others Model contact us										
KOSO										
Models 110D + 501D + 511D	EBZG-H	•	•	•						

(1) Since this reference covers a wide range of actuators, the user might have to adapt certain attachment kits for some actuators slightly
 Da sich diese Referenz auf eine größere Anzahl von Antrieben bezieht, könnten geringfügige Änderungen bei Anbausätzen einiger Antriebe erforderlich sein
 Comme cette référence couvre une très large gamme de servomoteurs, il se peut que le client pour quelques servomoteurs soit obligé d'adapter légèrement notre kit de montage

Standard- und Sonder- Anbausätze, sortiert nach Hersteller / Typ des Antriebes
Standard and specific attachment kits classify by manufacturer / type of actuator
Kits de montage standard et spécifique par constructeurs / type de servomoteur

Type / Version	Model Code of attachment kit	SRD998	SRD991 SR1990	SRD960	SRP981	SR1983	SR1986	SGE985	SM1983	SMP981
MASONEILAN										
37/38 (linear) sizes 15 / 18	EBZG-TN (1)				•	•		•	•	•
	EBZG-QN (1)						•			
	EBZG-M2	•	•	•						
37/38 (linear) sizes 9 / 11 / 13	EBZG-TN (1)				•	•		•	•	•
	EBZG-QN (1)						•			
	EBZG-M6	•	•	•						
87/88 all size (linear)	EBZG-DN (1)						•			
	EBZG-EN (1)				•	•		•	•	•
87/88 with stroke < 80mm	EBZG-M4		•	•						
87/88 with stroke > 80mm	EBZG-M4 +		•	•						
	EBZG-B									
28000 Series VARIPAK	EBZG-LN						•			
	EBZG-MN				•	•		•	•	•
	EBZG-M5	•	•	•	Not valid for SR1990!					
Paramax		planned	planned							
CAMFLEX I	EBZG-M8 (new design)	•	•	•						
35000 Series CAMFLEX II	EBZG-RN				•	•	•	•	•	•
	EBZG-M	•	•	•						
MINITORK I	EBZG-M9	•	•	•	<- The thread where the carrier bolt is screwed muss be adapted to M6					
37000 Series MINITORK II	EBZG-RN				•	•	•	•	•	•
	EBZG-M	•	•	•						
47/48 SIGMA F	EBZG-SN				•	•	•	•	•	•
	EBZG-M1	•	•	•						
71 DOMOTOR size A	EBZG-M7		•	•						
MECAIR										
Serie NOVA	Schwenkantrieb / rotary actuator / servomoteur rotatif VDI/VDE 3845 => page 6									
NAF (FLOWERVE)										
NAF-RC	Schwenkantrieb / rotary actuator / servomoteur rotatif VDI/VDE 3845 => page 6									
NAF-Turnex (direct mounting)	EBZG-N9		•	•						

- (1) Since this reference covers a wide range of actuators, the user might have to adapt certain attachment kits for some actuators slightly
 Da sich diese Referenz auf eine größere Anzahl von Antrieben bezieht, könnten geringfügige Änderungen bei Anbausätzen einiger Antriebe erforderlich sein
 Comme cette référence couvre une très large gamme de servomoteurs, il se peut que le client pour quelques servomoteurs soit obligé d'adapter légèrement notre kit de montage

Standard- und Sonder- Anbausätze, sortiert nach Hersteller / Typ des Antriebes
Standard and specific attachment kits classify by manufacturer / type of actuator
Kits de montage standard et spécifique par constructeurs / type de servomoteur

Type / Version	Model Code of attachment kit	SRD998	SRD991 SRI990	SRD960	SRP981	SRI983	SRI986	SGE985	SMI983	SMP981
NELES - METSO										
Rotary actuators Type BJ and BC size 8 & 10 Mounting with feedback levers	EBZG-L1	•	•	•						
Type Ec and Ej	EBZG-L4	•	•	•						
Rotary actuators Type B1CU C/20 E	EBZG-L5	•	•	•						
Rotary actuators Type BJ and BC size 8 to 16 Mounting with direct rotary coupling	EBZG-L6	•	•	•						
Rotary actuators Type BJ and BC size 25 to 50 Mounting with original Neles's rotary coupling	EBZG-L7	•	•	•						
Rotary actuators BJ and BC6 Mounting with feedback levers	EBZG-L8		•	•						
NORBRO (FLOWSERVE)										
Schwenkantrieb / rotary actuator / servomoteur rotatif VDI/VDE 3845 => page 6 Anbaukonsole / Mounting bracket / console de montage VDI/VDE 3845 => page 14										
NORGREN										
(1) Cylinder Type RA/8100 (250 mm stroke) Others sizes please contact us	EBZG-X7	•	•	•						
NUOVO PIGNONE (GE Power)										
Same attachment kit than for Masoneilan 37/38										
OMAL										
Schwenkantrieb / rotary actuator / servomoteur rotatif VDI/VDE 3845 => page 6										
ORBINOX										
Knife gate valves	EBZG-B2	•	•	•						
ORIGA										
(1) Cylinder Type AZ5063 (300 mm stroke) Others sizes please contact us	EBZG-X6	•	•	•						
PETRAS										
In association with a special kit from Petras	EBZG-NN EBZG-R				•	•	•	•	•	•
POLNA										
Linear Type 37/38 size 9,11,13	EBZG-M6	•	•	•						
Linear Type 37/38 size 15, 18	EBZG-M2	•	•	•						
Linear Type P1/R1 with stroke < 80mm	EBZG-M4		•	•						
Linear Type P1/R1 with stroke > 80mm	EBZG-M4 + EBZG-B		•	•						
Linear Type P3/R3	EBZG-E EBZG-E1	•	•	•						
Linear Type P/R	EBZG-K		•	•						
Rotary BR33 Series	EBZG-P3	•	•	•						

(1) Since this reference covers a wide range of actuators, the user might have to adapt certain attachment kits for some actuators slightly

Da sich diese Referenz auf eine größere Anzahl von Antrieben bezieht, könnten geringfügige Änderungen bei Anbausätzen einiger Antriebe erforderlich sein

Comme cette référence couvre une très large gamme de servomoteurs, il se peut que le client pour quelques servomoteurs soit obligé d'adapter légèrement notre kit de montage

Standard- und Sonder- Anbausätze, sortiert nach Hersteller / Typ des Antriebes
Standard and specific attachment kits classify by manufacturer / type of actuator
Kits de montage standard et spécifique par constructeurs / type de servomoteur

Type / Version	Model Code of attachment kit		SRD991 SRI990	SRD960	SRP981	SRI963	SRI966	SGE985	SMI983	SMP981
P + W (FLOWSERVE)										
Plugvalve type BR33 in association with adaptation from P+W	Schwenkantrieb / rotary actuator / servomoteur rotatif VDI/VDE 3845 => page 6									
REMOTE Control										
Schwenkantrieb / rotary actuator / servomoteur rotatif VDI/VDE 3845 => page 6										
RESEARCH Control Valves (BADGER METER)										
Series 9000	EBZG-H1		•	•						
Series 754 and 755 size 1/2"	EBZG-B1	•	•	•						
ROTORK										
Model GP 065 - GP 271	EBZG-B1	•	•	•						
SAMSON										
Type 271, 3271 (not valid for type 3271-5)	EBZG-H1		•	•						
	EBZG-GN				•	•		•	•	•
	EBZG-HN						•			
Mounting according the VDI/VDE3847 norm	EBZG-N1		•							
Typ 3277 (direct-mount. 1/4NPT) (not valid for type 3277-5)	EBZG-S1		•	Attachment kit without manometre						
	EBZG-S5		•	Attachment kit with manometre						
Typ 3277 (direct-mounting G1/4) (not valid for type 3277-5)	EBZG-S2		•	Attachment kit without manometre						
	EBZG-S6		•	Attachment kit with manometre						
Typ 3277-5 (direct-mounting) Old type with commutation plate fixed with 2 screws	EBZG-S8		•	Not for SRI990, not for SRD960						
Typ 3277-5 (direct-mounting) New type with commutation plate fixed with 1 screw	EBZG-S13		•	Not for SRI990, not for SRD960						
SCHMIDT Armaturen (FLOWSERVE) - FOXBORO Control Valves - ECKARDT										
Direct mounting	EBZG-D		•							
FoxTop / FoxPak (Flowserve)	EBZG-E		•							
SCHLUMBERGER										
Linear Actuator all size :										
Front Mounting	EBZG-S15	•	•	•						
	EBZG-S15N				•	•				
Side Mounting	EBZG-S16	•	•	•						
SCHUBERT & SALZER										
	EBZG-FN				•	•		•	•	•
	EBZG-KN						•			
	EBZG-K1		•	•						
SEREG (FLOWSERVE)										
Maxflo "old type"	EBZG-S7	•	•	•	<- Maxflo first generation produced till 1983					
Maxflo Actuator NR, CNR "new"	EBZG-S4	•	•	•	<- Only if actuator is prepared for mounting of positioner!					
Maxflo Actuator NR1	EBZG-S4 + BHX426232132		•	•						
Maxflo Actuator NR1	EBZG-SB + BHX426232132				•	•	•	•	•	•
Maxflo Actuator NR2	EBZG-S4 + BHX426232141		•	•						
Maxflo Actuator NR2	EBZG-SB + BHX426232141				•	•	•	•	•	•
Maxflo Actuator NR3	EBZG-S4 + BHX426232152		•	•						
Maxflo Actuator NR3	EBZG-SB + BHX426232152				•	•	•	•	•	•
Maxflo Actuator NR3/NR2/NR1	EBZG-SB				•	•	•	•	•	•
					Only if actuator is prepared for mounting of positioner!					
Maxflo Actuator NX1	EBZG-S9	•	•	•						
Maxflo Actuator NX2	EBZG-S10	•	•	•						
Maxflo Actuator NX3	EBZG-S11	•	•	•						
Sereg Flowserve NL4	EBZG-S14	•	•	•						

Standard- und Sonder- Anbausätze, sortiert nach Hersteller / Typ des Antriebes
Standard and specific attachment kits classify by manufacturer / type of actuator
Kits de montage standard et spécifique par constructeurs / type de servomoteur

Type / Version	Model Code of attachment kit	SRD998	SRD991 SR1990	SRD960	SRP981	SR1983	SR1986	SGE985	SMI983	SMP981
SIEMENS										
V series	EBZG-S3	•	•	•						
SOMAS										
Rotary Actuator Type A	Schwenkantrieb / rotary actuator / servomoteur rotatif VDI/VDE 3845 => page 6									
STAR LINE										
All Rotary actuators	Schwenkantrieb / rotary actuator / servomoteur rotatif VDI/VDE 3845 => page 6									
TURFLIN (XOMOX)										
Model MX60	EBZG-T1	•	•	•						
Model MX200	EBZG-T2	•	•	•						
Model MX450, MX750, MX1250	EBZG-T3	•	•	•						
Model MX3000	EBZG-T4	•	•	•						
UHDE (SHANZI Project)										
Specific Application	EBZG-U1		•	•						
VALTEK (FLOWSERVE)										
(1) Linear actuators all size with stroke < and = 4 inch	EBZG-V1		•	•						
(1) Linear actuators size 200 and 300 with stroke 6 and 8 inch	EBZG-V4	•	•	•						
(1) Linear actuators size 200 with stroke 12 inch	EBZG-V5	•	•	•						
VELAN										
	EBZG-XN				•		•			
VETEC										
Actuator R Series all sizes	EBZG-V2	•	•	•						
VH-Armaturen										
	Schwenkantrieb / rotary actuator / servomoteur rotatif VDI/VDE 3845 => page 6									
WEHLAN										
	Schwenkantrieb / rotary actuator / servomoteur rotatif VDI/VDE 3845 => page 6									
WORCESTER										
Series 39	EBZG-W1	•	•							
WYECO - TRACO Control Valves										
Diaphragm actuator type D	EBZG-GN				•	•		•	•	•
	EBZG-HN						•			
	EBZG-H1		•	•						
XOMOX mit EL-O-MATIC										
	Schwenkantrieb / rotary actuator / servomoteur rotatif VDI/VDE 3845 => page 6									

- (1) Since this reference covers a wide range of actuators, the user might have to adapt certain attachment kits for some actuators slightly
 Da sich diese Referenz auf eine größere Anzahl von Antrieben bezieht, könnten geringfügige Änderungen bei Anbausätzen einiger Antriebe erforderlich sein
 Comme cette référence couvre une très large gamme de servomoteurs, il se peut que le client pour quelques servomoteurs soit obligé d'adapter légèrement notre kit de montage

Auswahlhilfe für Anbaukonsolen einiger Hersteller
Help to select the mounting bracket for some manufacturer
Aide au choix de console de montage pour certains constructeurs

AIR TORQUE

Antriebsgröße actuator size taille de servomoteur	Ritzelüberstand / Height of nob B	Bohrbild / Fixings Ax...	Anbaukonsolen / brackets / consoles de montage			
			EBZG-C1 A=80, B=20	EBZG-C2 A=80, B=30	EBZG-C3 A=130, B=50	EBZG-C4 A=130, B=30
DR/SC 15, 30, 60, 100, 150	20	80x30	●			
DR/SC 220, 300, 450, 600	30	80x30		●		
DR/SC 900, 1200, 2000, 3000	50	130x30			●	

AMG

Antriebsgröße actuator size taille de servomoteur	Ritzelüberstand / Height of nob B	Bohrbild / Fixings Ax...	Anbaukonsolen / brackets / consoles de montage			
			EBZG-C1 A=80, B=20	EBZG-C2 A=80, B=30	EBZG-C3 A=130, B=50	EBZG-C4 A=130, B=30
005	11	50x20				
010, 020, 025, 030, 033, 035, 040, 042	20	80x30	●			
045, 050	30	130x30				●

Bar

Antriebsgröße actuator size taille de servomoteur	Ritzelüberstand / Height of nob B	Bohrbild / Fixings Ax...	Anbaukonsolen / brackets / consoles de montage			
			EBZG-C1 A=80, B=20	EBZG-C2 A=80, B=30	EBZG-C3 A=130, B=50	EBZG-C4 A=130, B=30
GTD/GTE-046, -056, -066, -076, - 086, -096, -110, -115, -127	30	80x30		●		
GTD/GTE-143, -163, -185, -210, - 250, -254, -300	30	130x30				●

EL-O-MATIC

Antriebsgröße actuator size taille de servomoteur	Ritzelüberstand / Height of nob B	Bohrbild / Fixings Ax...	Anbaukonsolen / brackets / consoles de montage			
			EBZG-C1 A=80, B=20	EBZG-C2 A=80, B=30	EBZG-C3 A=130, B=50	EBZG-C4 A=130, B=30
ED/ES 12	20	40x31				
ED/ES 25, 40, 65, 100, 200, 350	20	80x30	●			
ED/ES 600, 950, 1600, 2500, 4000	30	130x30				●

Auswahlhilfe für Anbaukonsolen einiger Hersteller
Help to select the mounting bracket for some manufacturer
Aide au choix de console de montage pour certains constructeurs

NORBRO

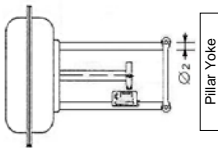
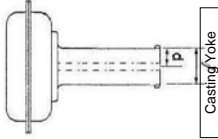
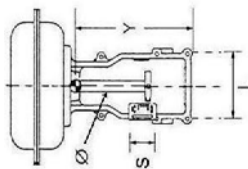
Antriebsgröße actuator size taille de servomoteur	Ritzelüberstand / Height of nob B	Bohrbild / Fixings Ax...	Anbaukonsolen / brackets / consoles de montage			
			EBZG-C1 A=80, B=20	EBZG-C2 A=80, B=30	EBZG-C3 A=130, B=50	EBZG-C4 A=130, B=30
05 AR/BR 40	13	Dm. 36				
10, 15, 20 AR/BR 40	20	80x30	●			
25, 30, 33, 35 AR/BR 40	30	80x30		●		
40, 42, 45, 50 AR/BR 40	50	130x30			●	

Keystone (Tyco)

Antriebsgröße actuator size taille de servomoteur	Ritzelüberstand / Height of nob B	Bohrbild / Fixings Ax...	Anbaukonsolen / brackets / consoles de montage			
			EBZG-C1 A=80, B=20	EBZG-C2 A=80, B=30	EBZG-C3 A=130, B=50	EBZG-C4 A=130, B=30
79D Models 002, 003, 006, 036	20	80x30	●			
79U/E Models 002, 003, 036	20	80x30	●			
79U/E/D Models 065, 090, 180	30	130x30				●
Models 002 to 036	20		●			
Models 065, 180	30					●

Mesures nécessaires au développement d'un nouveau kit de montage
Necessary measurements to develop a new attachment kit
Notwendige Messungen um ein neues Anbausatz zu entwickeln

NECESSARY MEASUREMENTS FOR THE DETERMINATION OF ATTACHMENT KIT FOR LINEAR ACTUATORS



(dimensions in mm)

Tag N°	Supplier	Model	S	L	Y	Ø	l	P	Ø 2	CARRIER BOLT	EXISTING HOLES		
											FRONT VIEW	LEFT	RIGHT
PV803	Masoneilan	?	30	120	150	30	80	40	/	 Threads 5/16"			