

I/A Series[®] Intelligent Vortex Flowmeters

—

**Models 84W-T, 84W-U, and 84W-L
Wafer Body Flowmeters**

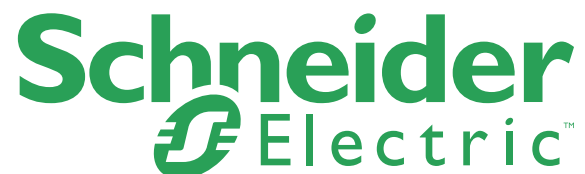
—

**with
HART Communication Protocol**

Give instrument Model Code when ordering.

*Parts preceded by an asterisk are recommended spare parts.
See Recommended Spare Parts Summary section for quantities.

TO ORDER PARTS, CALL 1-866-746-6477.



MODEL CODE

Description	Model
Intelligent Vortex Flowmeter – Wafer Body	84W
Electronics Type	
Intelligent Electronics, HART Communication Protocol, with Pulse Output	-T
Intelligent Electronics, HART Communication Protocol, without Pulse Output	-U
Intelligent, Electronics, Low Power HART Protocol, with Pulse Output	-L
Nominal Line Size	
3/4 in (DN 15) Line Size	3Q
1 in (DN 25) Line Size	01
1 1/2 in (DN 40) Line Size	1H
2 in (DN 50) Line Size	02
3 in (DN 80) Line Size	03
4 in (DN 100) Line Size	04
6 in (DN 150) Line Size	06
8 in (DN 200) Line Size	08
Body and Shedder Bar Material	
ASTM A351-CF8M (316 ss) Cast Body and Shedder	S
ASTM A494-CW2M Nickel Alloy (a) Cast Body and Shedder; with Size Codes 3Q to 04 only	H
Mounting and Centering System	
Description	
Used with Line Sizes	
Centering for ANSI Class 150 and 300 Flanges	All line sizes
Centering for ANSI Class 600 Flanges	3Q through 04 only
Centering for Metric PN 16 Flange	01 through 03 only
Centering for Metric PN 40 Flange	01 through 03 and 06 and 08 only
Centering for Metric PN 63 and PN 100 Flanges	All line sizes
Centering for ANSI Class 600 Flange	06 and 08 only
Centering for Metric PN 16 Flange	04, 06, and 08 only
Centering for Metric PN 40 Flange	04 only
Centering for Metric PN 16 and PN 40 Flanges	Size 3Q only
1	3
1	4
1	5
1	9
Isolation Valve and Manifold	
No Isolation Valve or Manifold	S
Manifold with Isolation Valve, ASTM A 351-CF8M Stainless Steel (316 ss)	K
Sensor Fill, Temperature Range, and Material	
Standard Temperature Range (with Fill Fluid)	
Fluorolube Fill, 0 to 200°F (-18 to +93°C), Nickel Alloy CW2M (a)	D
Fluorolube Fill, 0 to 200°F (-18 to +93°C), Stainless Steel Type CF3M	F
Silicone Fill, 0 to 400°F (-18 to +204°C), Nickel Alloy CW2M (a)	R
Silicone Fill, 0 to 400°F (-18 to +204°C), Stainless Steel Type CF3M	S
Extended Temperature Range (No Fill Fluid) (b)	
Unfilled, 300 to 800°F (149 to 427°C), Nickel Alloy CW2M (a)	C
Unfilled, 300 to 800°F (149 to 427°C), Stainless Steel Type CF3M	T
Electronics Housing Mounting, Material, and Conduit Connections	
Integrally Mounted to Flowtube; Aluminum Housing, 1/2 NPT Conduit Connection	T
Integrally Mounted to Flowtube; Aluminum Housing, M20 Conduit Connection	V
Remote Mounted; Aluminum Housing, 1/2 NPT Conduit Connection (c)	R
Remote Mounted; Aluminum Housing, M20 Conduit Connection (c)	W
Local Digital Indicator/Configurator	
No Digital Indicator/Configurator	N
Full Function Digital Indicator/Configurator	J

<u>Description</u>	<u>Model</u>
Electrical Safety (refer to Electrical Safety Specifications section for details)	
ATEX intrinsically Safe	E
ATEX flameproof	H
CSA intrinsically safe	C
CSA Division 2	M
CSA explosionproof	D
EAC intrinsically safe	1
EAC flameproof	2
FM intrinsically safe	F
FM nonincendive	K
FM explosionproof	G
IECEX intrinsically safe	L
IECEX flameproof	B
INMETRO intrinsically safe	3
INMETRO flameproof	4
KOSHA, flameproof	5
NEPSI intrinsically safe	R
NEPSI flameproof	S
No Agency Electrical Certifications; with CE mark, PED Controls and Records	Y
No Agency Certifications; no CE mark; Units not to be installed in European Union (EU) countries	Z
Optional Selections	
Cable Length Selection for Remote Electronics Housing	
20 ft (6 m) Cable to Connect to Remote Electronics Housing	-B
30 ft (9 m) Cable to Connect to Remote Electronics Housing	-D
40 ft (12 m) Cable to Connect to Remote Electronics Housing	-E
50 ft (15 m) Cable to Connect to Remote Electronics Housing	-G
Cleaning - Oxygen/Chlorine Service	
Cleaning of Process Wetted Parts per Compressed Gas Association's CGA G-4.1 and ASTM G93 Not available with Isolation Valve Code K, or Sensor Codes C and T	-H
Sensor Plating	
Gold Plated Sensor	-J
Schneider Electric Certificates of Compliance/Conformance	
Standard Certificate of Compliance	-L
Material Certification of Process Wetted Metal (Conforms to BS EN 10204 3.1)	-M
Process Wetted Parts Comply with NACE Standards MR-0175-2003 and MR-0103-2007	-Q
Schneider Electric Calibration Certificate	
Calibration and Pressure Test Certified Copy	-N
Cable Connectors – with Electronics Housing Codes T and R only (1/2 NPT)	
Hawke-Type Cable Gland (available only with electrical safety codes Y and Z)	-P
PG11 Cable Gland, Trumpet Shaped (not with explosionproof/flameproof certifications)	-R
Conduit Fitting	
Adapter for use with 1/2 NPT conduit (Available with Remote Mounted Housing Code R only)	-T
Instruction Manual	
Detailed Instruction Manual in hard copy format (d)	-C
Examples: 84W-T02S1SRRJF-D; 84W-U04H4SRTNF-CL	

- Equivalent to Hastelloy® C-4C. Hastelloy® is a registered trademark of Haynes International, Inc.
- Application ALERT: For Extended Temperature Range sensors used in hazardous or volatile gas applications, there is the potential of fugitive emissions to occur through the sensor vented restrictor if the sensor diaphragm were to fail.
- With remote mounted electronics housing, you must also select Optional Cable Length -B, -D, E, or -G.
- A DVD containing the full documentation set is shipped standard with this product.

PARTS

Figure 1. MODEL 84W
ELECTRONICS HOUSING ASSEMBLY

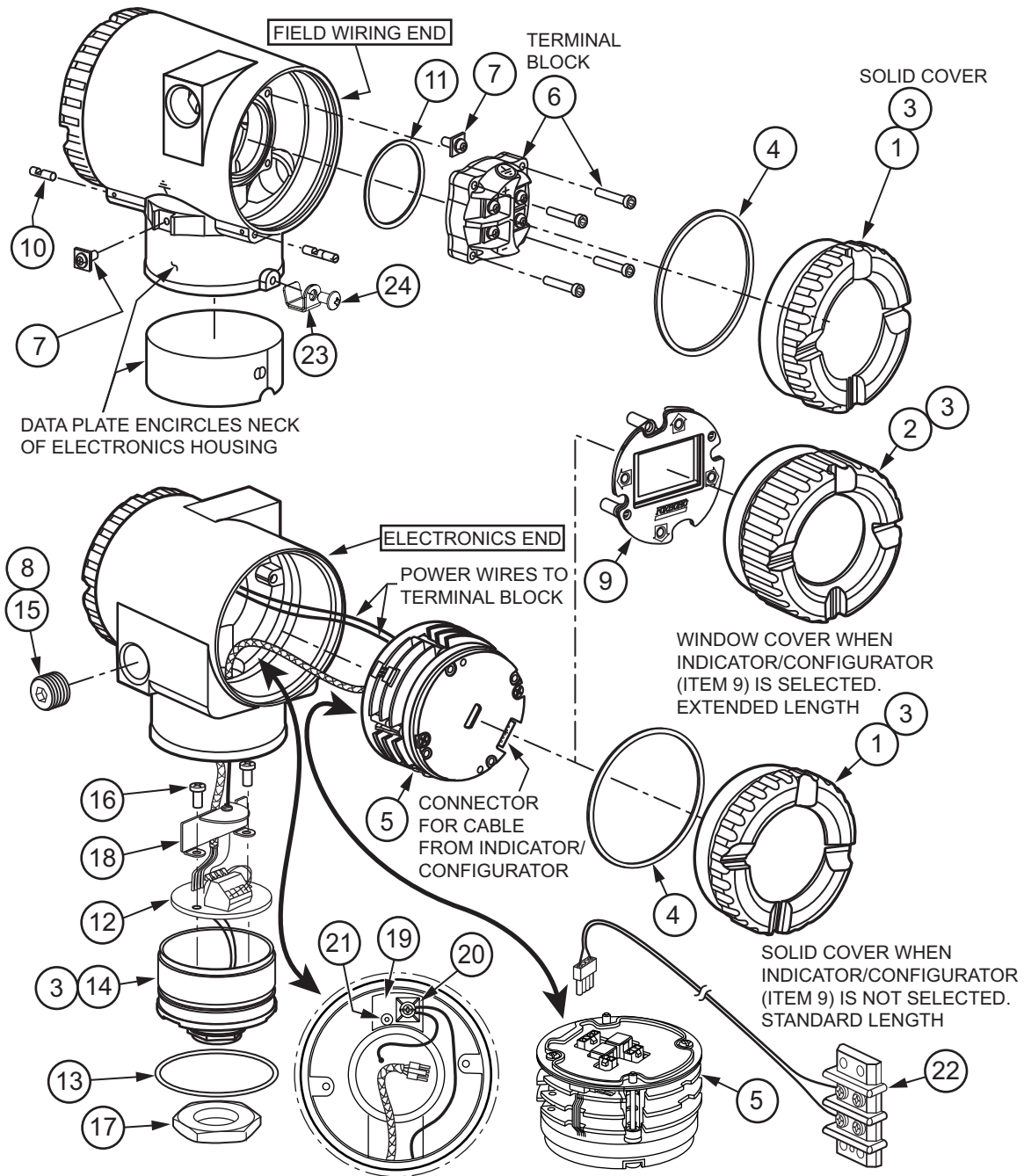


Table 1. Parts for Figure 1

Item	Part No.	Qty.	Part Name
1	D0162AP	2	Cover, Aluminum; No Indicator/Configurator
2	K0147YA	1	Cover, Aluminum; with Window; used when Indicator/Configurator is selected, replaces Item 1 on electronics end.
3	X0114AT	A/R	Grease, 14 ounce can (a)
*4	X0201FC	2	O-ring, Cover
*5	Below	1	Electronics Module Assembly
	K0147VT		with Pulse Output (Version -T)
	K0148SL		without Pulse Output (Version -U)
	K0152PD		LOW POWER with Pulse Output (Version -L)
6	Below	1	Terminal Block Assembly - with or without Pulse Output. (The terminal block assembly includes 4 mounting screws.)
	K0147ZS		with Pulse Output (non-explosionproof installations)
	K0149FM		with Pulse Output (flameproof/explosionproof installations)
	K0148XE		without Pulse Output (non-explosionproof installations)
	K0149FN		without Pulse Output (flameproof/explosionproof installations)
7	D0162VJ	2	Screw Assembly, Plated ss, 0.164-32 x 0.375
8	B1270KE	A/R	Sealant, Thread (a)
*9	K0149GV	1	LCD Indicator/Configurator Replacement Kit; Includes Indicator/Configurator, label, screws, and instructions
*10	D0162WM	2	Screw, Cover Lock, 0.164-32 (b)
11	X0144KR	1	O-ring, Terminal Block
*12	Below	1	Sensor Interface Assembly
	L0123HH		Standard Temperature, non-explosionproof transmitters (no preamplifier).
	L0123HF		Standard Temperature, flameproof or explosionproof transmitters with barrier (no preamplifier).
	L0123HG		Extended Temperature, non-explosionproof transmitters (with preamplifier).
	L0123HD		Extended Temperature, flameproof or explosionproof transmitters with barrier (with preamplifier).
*13	Below	1	O-ring, Housing Neck
	X0201LY		O-ring - Standard
	X0144KW		O-ring - for use with CSA certifications only (see WARNING below)
14	Below	1	Cup, Housing Neck
	K0152TP		O-ring - Standard
	K0148TX		O-ring - for use with CSA certifications only (see WARNING below)
15	Below	1	Plug, Pipe; (See WARNING below)
	B0139CA		1/2 NPT; Aluminum; with Housing Codes T and R
	D0179FK		M20; ss; with Housing Codes V and W
16	X0173UN	2	Screw, Pan Head; Cross Recessed; ss; M4 x 0.7 x 9 mm (.03 x 0.35 in)
17	K0148TQ	1	Nut, Jam; Hex Head; ss; 0.500-14
18	K0152JY	1	Shield Assembly
19	K0152JV	1	Molding, Terminal Block

Table 1. Parts for Figure 1 (Continued)

Item	Part No.	Qty.	Part Name
20	K0152JX	1	Screw Assembly, P.E.; ss; 0.164-32 x 0.315
21	X0133VN	1	Screw, Socket Head; ss; 0.138-32 x 0.437
22	K0152KU	1	Harness, Test; Accessory (c)
23	D0197PS	1	Clip, Retention
24	X0174EK	1	Screw, Button Head

- a. Recommended lubricant and thread sealant is indicated for threaded parts. An equivalent commercially available equivalent lubricant or thread sealant may also be used.
- b. Cover lock screws are provided with ATEX/IECEX/NEPSI/INMETRO/EAC/KOSHA flameproof electrical certifications. They are used to help prevent rotation of the housing covers. To remove a cover, turn screw clockwise until screw clears the cover groove; then remove cover. To put cover back in place, screw cover on, and then turn screw counterclockwise until it engages the cover groove.
- c. The test harness provides a method for inputting a frequency using a frequency generator, for those users who require a test input for validation.

▲ WARNING

RISK OF MOISTURE INGRESS

To maintain IP66 (IEC 529) and NEMA 4X protection, the unused conduit opening must be closed with a metal plug. In addition, the threaded housing covers must be properly installed.

Failure to follow these instructions can result in death or serious injury.

▲ WARNING

RISK OF ANSI/ISA NONCOMPLIANCE

Failure to install the proper Housing Neck O-ring and Housing Neck Cup (Items 13 and 14) for CSA-labeled products violates ANSI/ISA 12.27.01.

Failure to follow these instructions can result in death or serious injury.

**Figure 2. MODEL 84W FLOWMETER ASSEMBLY
WITH REMOTE MOUNTED ELECTRONICS HOUSING**

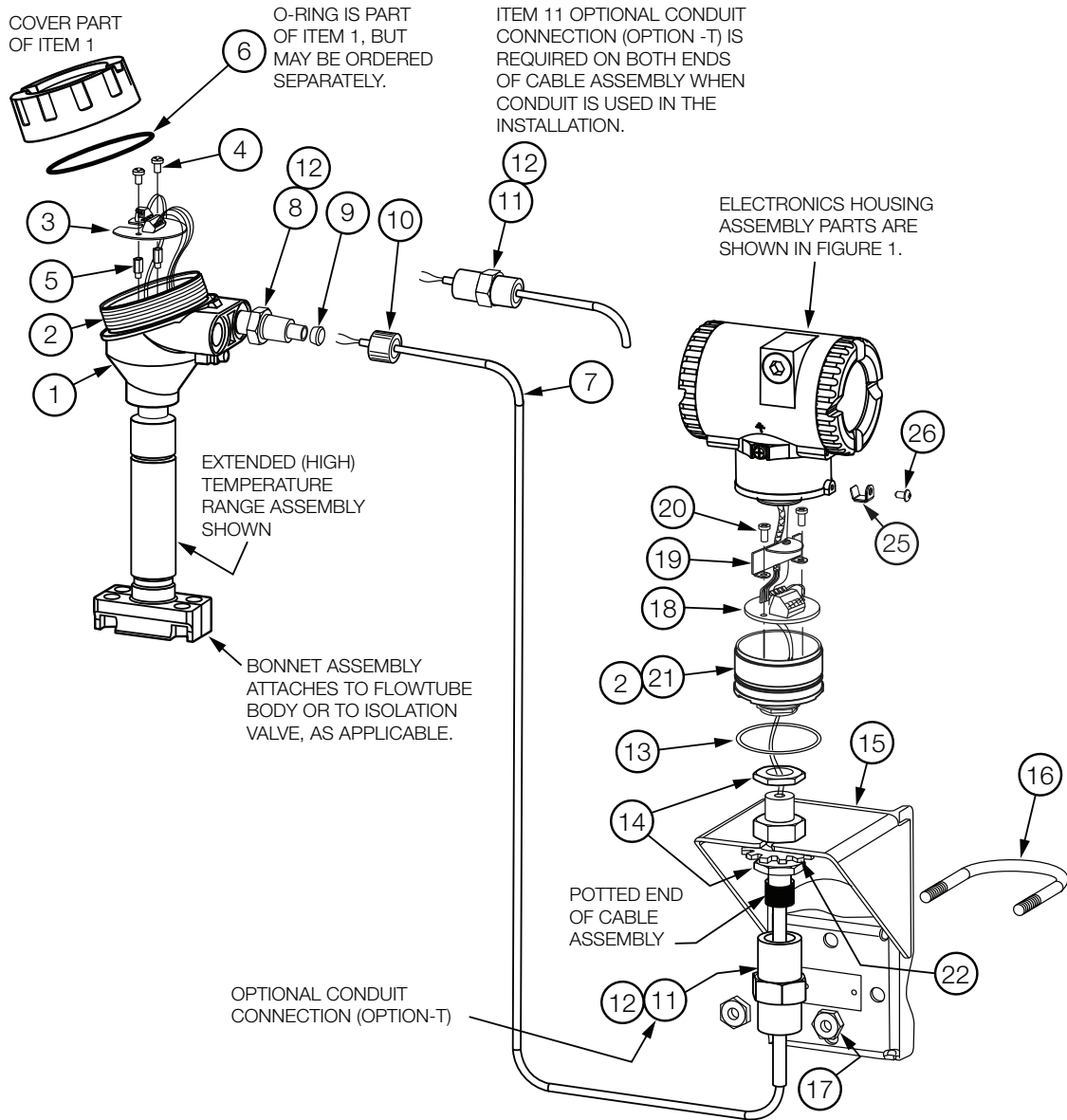


Table 2. Parts for Figure 2

Item	Part No.	Qty.	Part Name
1	K0152GB	1	Connection Head Assembly (Junction Box); explosionproof; ss; Includes housing, cover, cover lock, and cover O-ring
2	X0114AT	A/R	Grease, 14 ounce can (a)
*3	Below	1	Preamplifier Assembly
	L0123HT		Standard Temperature
	L0123HV		Extended Temperature
4	X0173UN	2	Screw, Pan Head; Cross-recessed; ss; M4 x 0.7 x 9 mm (.03 x 0.35 in)
5	X0201KL	2	Standoff, hexagonal head; ss; M4 x 10 mm (.39 in)
*6	D0179EG	1	O-ring, Cover; Part of Item 1 but may be ordered separately
7	Below	1	Cable Assembly, Remote Housing (includes Connector Assembly) (b)
	K0149HU		20 ft (6 m) long
	K0149HV		30 ft (9 m) long
	K0149HW		40 ft (12 m) long
	K0149HX		50 ft (15 m) long
8	B0185AJ	1	Adapter; 1.125 Hexhd; ss; 1/2 NPT and 0.500-20
9	K0146JV	1	Bushing, silicone rubber; 0.275 in long; 0.280 I.D.
10	B0185AK	1	Nut, Knurled; ss; 0.542 in long; 0.500-20
11	K0149LE	2	Connector, Conduit; Option -T (required when conduit is used)
12	B1270KE	A/R	Sealant, Thread (a)
*13	Below	1	O-ring, Housing Neck
	X0201LY		O-ring - Standard
	X0144KW		O-ring - for use with CSA certifications only - See WARNING below
14	K0148TQ	2	Nut Jam; 1.250 Hexhd; ss; 0.500-20
15	K0149HR	1	Bracket Assembly, Mounting; painted steel
16	D0114SM	1	U-Bolt, 0.312-18; plated steel
17	0011962	2	Nut, 0.312-18; plated steel
*18	Below	1	Sensor Interface Assembly
	L0123HH		Standard and Extended Temperature, intrinsically safe transmitters (no preamplifier).
	L0123HF		Standard and Extended Temperature, flameproof or explosionproof transmitters with barrier (no preamplifier).
19	K0152JY	1	Physical Ground (PE) Shield Assembly (flameproof units only)
20	X0173UN	2	Screw, Panhd; Cross Recessed; ss; M4 x 0.7 x 9 mm (.03 x 0.35 in) with barrier (no preamplifier)

PARTS

Table 2. Parts for Figure 2 (Continued)

Item	Part No.	Qty.	Part Name
21	Below	1	Cup, Housing Neck
	K0152TP		Cup - Standard
	K0148TX		Cup - for use with CSA certifications only - see WARNING below
22	X0143SL	1	Washer, Lock; Extended Tooth; ss; 0.875
25	D0197PS	1	Clip, Retaining
26	X0174EK	1	Screw, Button Head

- a. Recommended lubricant and thread sealant is indicated for threaded parts. An equivalent commercially available equivalent lubricant or thread sealant may also be used.
- b. The cable assembly is provided potted on the electronics housing end. The opposite end is assembled to the connection head assembly using a bushing (Item 9) and a knurled nut (Item 10) as described in instruction document MI 019-202. When a conduit is used during installation, a conduit connector is used at each end of the cable assembly.

⚠ WARNING

RISK OF ANSI/ISA NONCOMPLIANCE

Failure to install the proper Housing Neck O-ring and Housing Neck Cup (Items 13 and 14) for CSA-labeled products violates ANSI/ISA 12.27.01.

Failure to follow these instructions can result in death or serious injury.

**Figure 3. 84W - SINGLE MEASUREMENT FLOWMETERS
STANDARD OR EXTENDED (EXT.) TEMPERATURE,
WITH OR WITHOUT ISOLATION MANIFOLD
(MODEL 84F (STYLE A) IS SHOWN. ASSEMBLY IS SIMILAR TO 84W)**

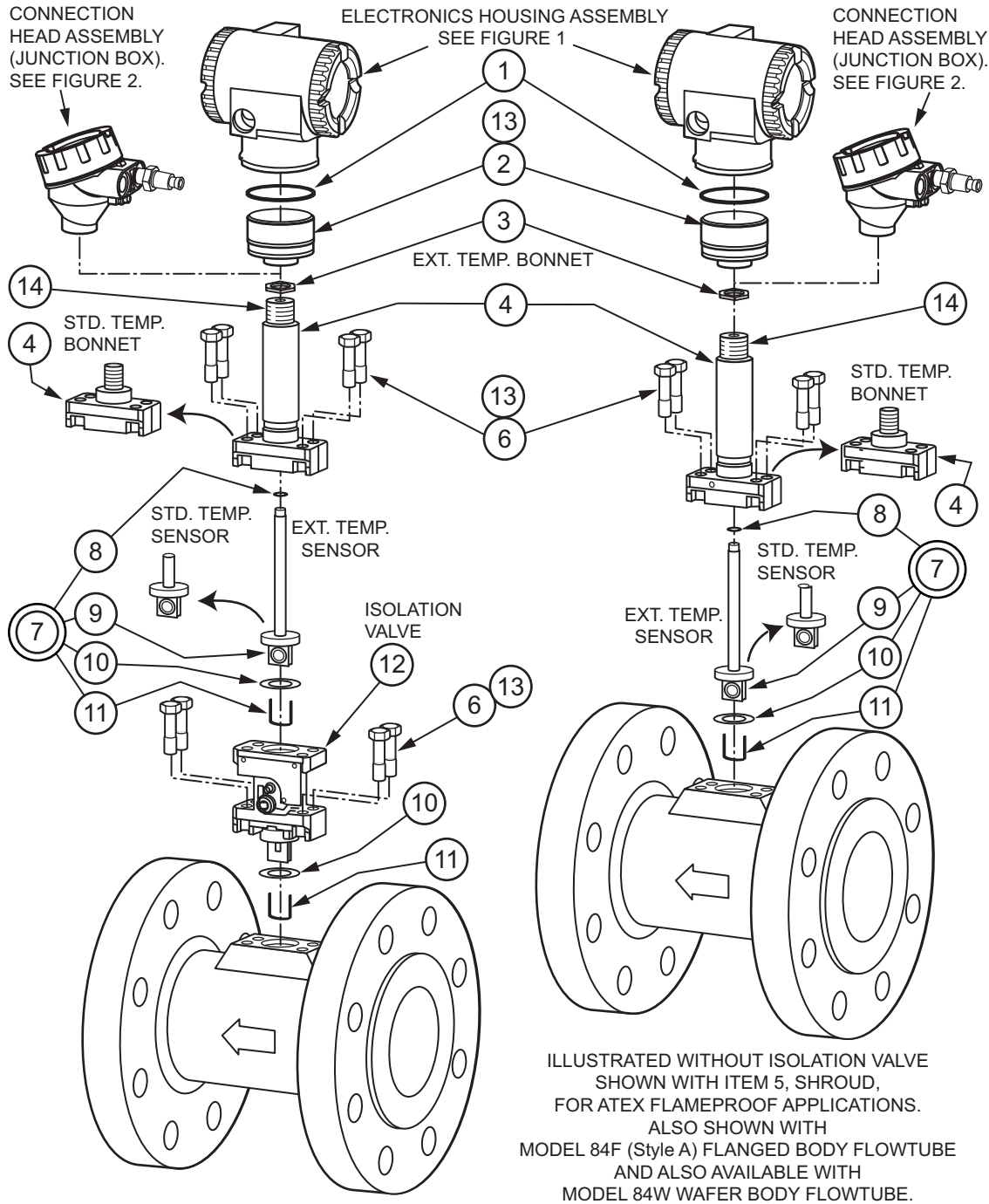


Table 3. Parts for Figure 3

Item	Part No.	Qty.	Part Name
*1	Below	1	O-ring, Housing Neck
	X0201LY		O-ring - Standard
	X0144KW		O-ring - for use with CSA certifications only (see WARNING below)
2	Below	1	Cup, Housing Neck
	K0152TP		Cup - Standard
	K0148TX		Cup - for use with CSA certifications only (see WARNING below)
3	K0148TQ	1	Nut, Jam; Hexhd; ss; 0.500-14
4	Table 1	1	Bonnet Assembly, Standard or Extended Temperature Ranges (a)
6	X0173MC	4/8	Bolt, ASTM A193, Grade B7, plated steel (b) (Also part of Item 7) Hexhd (0.625 hex); 0.437-14 x 1.5
*7	Below	Below	Sensor Replacement Kit (Items 6, 8, 9, 10, and 11) (a) (c) (d)
8	Table 2	1	O-ring, Standard or Extended Temperature Range
9	Table 2	1	Sensor, Types D, F, R, S, C, or T (Model Code Selections)
10	Table 2	1	Gasket, Standard or Extended Temperature Range
11	Table 2	1	Flow Dam, Standard or Extended Temperature Range
12	Below	1	Isolation Valve
	B0194VZ		Standard Temperature Range; 15 to 80 mm (3/4 to 3 in) Sizes
	B0194WA		Standard Temperature Range; 100 to 300 mm (4 to 12 in) Sizes
	B0194WF		Extended Temperature Range; 15 to 80 mm (3/4 to 3 in) Sizes
	B0194WG		Extended Temperature Range; 100 to 300 mm (4 to 12 in) Sizes
13	X0114AT	A/R	Grease; 14 ounce can
14	B1270KE	A/R	Sealant, Thread (e)

- The bonnet assembly and sensor kits are pressure containment components. Replacement of any of these components requires pressure safety testing. Refer to Instruction manual.
- Four bolts required when no isolation valve is used; eight bolts required when an isolation valve is used. Threads may be lubricated with an equivalent commercially available lubricant.
- Do not use Sensor Replacement Kits and Sensor Seal Kits (Table 5 and Table 6) for sensors that are used for oxygen service. These require special cleaning. Contact Global Customer Support.
- For gold plated sensor replacement, contact Global Customer Support.
- An equivalent commercially available thread sealant may also be used.

▲ WARNING

RISK OF ANSI/ISA NONCOMPLIANCE

Failure to install the proper Housing Neck O-ring and Housing Neck Cup (Items 1 and 2) for CSA-labeled products violates ANSI/ISA 12.27.01.

Failure to follow these instructions can result in death or serious injury.

Table 4. Bonnet Assembly (a)

Line Size Code	Isolation Valve Manifold	Standard Temperature		Extended Temperature	
		Non-Explosion proof Certs.	All Explosion proof Certs.	Non-Explosion proof Certs.	Explosion proof and Flameproof Certs.
3Q to 03	with or without	K0147GU	K0147GT	K0147GY	K0147GX
04 to 12	No	K0148SK	K0148SH	K0148TM	K0148TL
04 to 12	Yes	K0147GU	K0147GT	K0147GY	K0147GX

a. The bonnet assembly and sensor kits are pressure containment components. Replacement of any of these components requires pressure safety testing. Refer to Instruction manual.

Table 5. Sensor Replacement Kits for ATEX, CSA, IECEx, NEPSI, EAC, INMETRO, and KOSHA Certification Codes H, D, B, S, 2, 4, and 5 only (a) (b)

Kit Number	Replaces Sensor Code	Fill Fluid (c)	Mat'l (d)	Item 6 Bolt (4)	Item 8 O-Ring	Item 9 Sensor (e)	Item 10 Gasket	Item 11 Flow Dam
For Standard Temperature Range Flowmeters								
K0152KV	D	Fl.	Nickel alloy	X0173MC	D0100RP	K0148JK	L0121DT	L0112KT
K0152KW	F	Fl.	ss	X0173MC	D0100RP	K0148JJ	L0121DT	L0112KT
K0152KX	R	Sil.	Nickel alloy	X0173MC	D0100RP	K0148JH	L0121DT	L0112KT
K0152KY	S	Sil.	ss	X0173MC	D0100RP	K0148JG	L0121DT	L0112KT
For Extended Temperature Range Flowmeters								
K0152KZ	C	None	Nickel alloy	X0173MC	K0147CC	K0148KQ	K0146PT	K0148VB
K0152LA	T	None	ss	X0173MC	K0147CC	K0148KN	K0146HL	K0148VA
Sensor Replacement Kits for <u>other than</u> ATEX, CSA, IECEx, NEPSI, EAC, INMETRO, and KOSHA Certification Codes H, D, B, S, 2, 4, and 5								
For Standard Temperature Range Flowmeters								
K0148KV	D	Fl.	Nickel alloy	X0173MC	D0100RP	K0148JF	L0121DT	L0112KT
K0148KU	F	Fl.	ss	X0173MC	D0100RP	K0148JE	L0121DT	L0112KT
K0148KS	R	Sil.	Nickel alloy	X0173MC	D0100RP	K0148JD	L0121DT	L0112KT
K0148KR	S	Sil.	ss	X0173MC	D0100RP	K0148JC	L0121DT	L0112KT
For Extended Temperature Range Flowmeters								
K0148KY	C	None	Nickel alloy	X0173MC	K0147CC	K0148KM	K0146PT	K0148VB
K0148KX	T	None	ss	X0173MC	K0147CC	K0148KK	K0146HL	K0148VA

- a. Do not use Sensor Replacement Kits and Sensor Seal Kits (Table 5 and Table 6) for sensors that are used for oxygen service. These require special cleaning. Contact Global Customer Support.
- b. For gold plated sensor replacement, contact Global Customer Support.
- c. Fl. is Fluorinert; and Sil. is Silicone.
- d. Nickel alloy is equivalent to Hastelloy® CW2M; ss is Stainless Steel Type CF3M.
- e. For kits without a sensor, see Table 6, Sensor Seal Kits.

Table 6. Sensor Seal Kits (a) (b) (c)

Kit Number	Standard Temperature - Sensor Types D, F, R, and S			
	Item 6 Bolt (4)	Item 8 O-Ring	Item 10 Gasket	Item 11 Flow Dam
K0148VF	X0173MC	D0100RP	L0121DT	L0112KT
Extended Temperature - ss used for Sensor Type T				
K0148VG	X0173MC	K0147CC	K0146HL	K0148VA
Extended Temperature - Nickel alloy (d) used for Sensor Type C				
K0148VH	X0173MC	K0147CC	K0146PT	K0148VB

- a. The bonnet assembly and sensor kits are pressure containment components. Replacement of any of these components requires pressure safety testing. Refer to Instruction manual.
- b. Do not use Sensor Replacement Kits and Sensor Seal Kits (Table 5 and Table 6) for sensors that are used for oxygen service. These require special cleaning. Contact Global Customer Support.
- c. For gold plated sensor replacement, contact Global Customer Support.
- d. Equivalent to Hastelloy® C.

▲ WARNING

RISK OF ANSI/ISA NONCOMPLIANCE

Failure to install the proper Housing Neck O-ring and Housing Neck Cup (Items 2 and 3) for CSA-labeled products violates ANSI/ISA 12.27.01.

Failure to follow these instructions can result in death or serious injury.

**Figure 4. OPTIONAL CABLE CONNECTIONS
MODEL 84W
Optional Selections -P, -R, and -S**

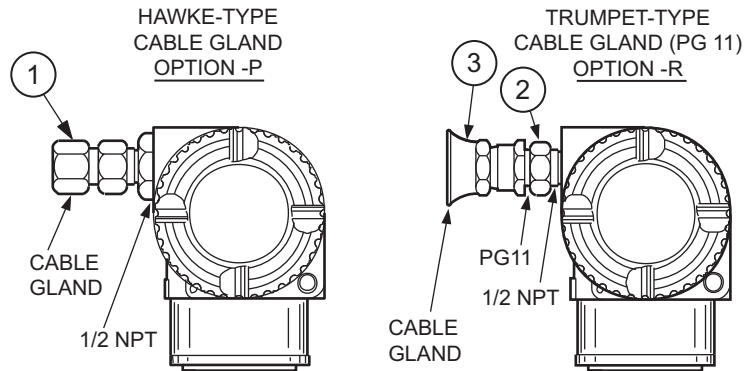


Table 7. Parts for Figure 5

Item	Part No.	Qty.	Part Name
1	N714HX	1	Hawke-Type Cable Gland (Option -P) (a)
2	N7141KR	1	Adapter, 1/2 NPT to PG 11 (Part of Option -R) (a) (b)
3	N7000AA	1	Trumpet-type Cable Gland - PG 11 (Part of Option -R) (a) (b)

- a. Cable connector options -P and -K are offered for use with Electrical Housing Codes T and R only (1/2 NPT).
- b. Option -R (Items 2 and 3) should be ordered as a set.

FLANGE BOLTING KITS - MODEL 84W ONLY

ANSI Flange Bolting Kits (a)

Line Size	Part No. for ANSI Class		
	150	300	600
3/4 in	D0148ZF	D0148ZJ	D0148ZJ
1 in	D0148ZF	D0148ZJ	D0148ZJ
1 1/2 in	D0148ZF	D0148ZK	D0148ZS
2 in	A2044HB	A2044HB (b)	A2044HC (b)
3 in	A2044HC	A2044HD	A2044HD
4 in	A2044HC (b)	A2044HD	A2044HE

DIN Flange Bolting Kits (a)

Line Size	Part No. for DIN Class			
	PN 16	PN 40	PN 64	PN 100
50 mm	N/A	D0148ZU	N/A	N/A
80mm	N/A	D0148ZZ (b)	N/A	N/A
100 mm	L0114NT	L0114NT	N/A	N/A

- a. These kits consist of studs and nuts which conform to size and material requirements necessary to meet pressure rating of specified flange type. These are normally supplied by the user but are optionally available either through the initial specification of the flowmeter or by ordering by part number from this table.
- b. Order a quantity of two (2) kits for this application.

RECOMMENED SPARE PARTS SUMMARY

RECOMMENED SPARE PARTS SUMMARY

Figure Number	Item Number	Part Number	Part Name	Number of Parts Recommended for		
				1 Inst.	5 Inst.	20 Inst.
1	4	X0201FC	O-ring, Electronics Housing Cover	2	4	8
	5	Below K0147VT K0148SL K0152PD	Electronics Module Assembly with Pulse Output (Version -T) without Pulse Output (Version -U) LOW POWER with Pulse Output (Version -L)	0	0	1
	9	K0149GV	LCD Indicator/Configurator Replacement Kit	0	0	1
	10	D0162WM	Screw, Cover Lock (a)	2	4	8
	12	Below L0123HH L0123HF L0123HG L0123HD	Sensor Interface Assembly (b) (c) Std Temp; intrinsically safe; no preamp Std Temp; flameproof/explosionproof; no preamp Extended Temp; Intr Safe; with barrier; with preamp Extended Temp; flameproof/explosionproof; with barrier; with preamp	0	0	1
	13	Below X0201LY X0144KW	O-ring, Housing Neck O-ring - Standard O-ring - for use with CSA Certifications only	1	2	4
2	3	Below L0123HT L0123HV	Preamplifier Assembly Standard Temperature Extended Temperature	0	0	1
	6	D0179EG	O-ring, Cover - for Connection Head Assembly	1	2	4
	13	Below X0201LY X0144KW	O-ring, Housing Neck O-ring - Standard O-ring - for use with CSA Certifications only	1	2	4
3	1	Below X0201LY X0144KW	O-ring, Housing Neck O-ring - Standard O-ring - for use with CSA Certifications only	1	2	4
4	2	Below X0201LY X0144KW	O-ring, Housing Neck O-ring - Standard O-ring - for use with CSA Certifications only	2	4	8

- a. Two cover lock screws are used with Electrical Safety Codes H, B, S, 2, 4, and 5 (ATEX, IECEx, NEPSI, EAC, INMETRO, and KOSHA flameproof units).
- b. Type D, F, R, and S sensors are for standard temperature applications.
- c. Type C and T sensors are for high temperature applications.

— NOTE —

Sensor replacement kits and sensor seal kits are also recommended for spares. These kits include applicable sensor type, an O-ring, a gasket, a flow dam, new bolts, and instructions. See Tables 5 and 6 for specific kit part numbers.

Schneider Electric Systems USA, Inc.
38 Neponset Avenue
Foxboro, MA 02035
United States of America
<http://www.schneider-electric.com>

Global Customer Support
Inside U.S.: 1-866-746-6477
Outside U.S.: 1-508-549-2424
<https://pasupport.schneider-electric.com>

Copyright 2006-2018 Schneider Electric Systems USA, Inc. All rights reserved.

Schneider Electric and I/A Series are trademarks of Schneider Electric Systems USA, Inc., its subsidiaries, and affiliates. All other trademarks are the property of their respective owners.

